

OPTICAL DISTRIBUTION BOXES

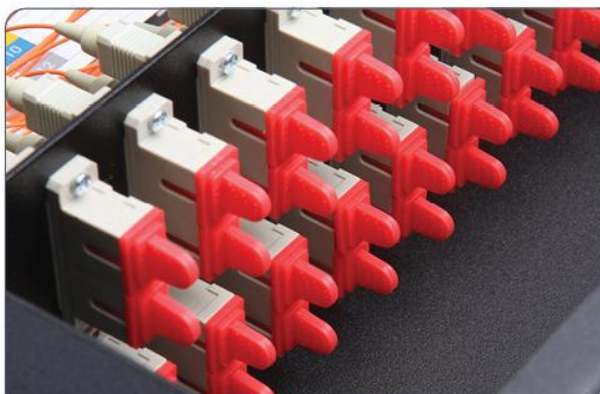


APPLICATIONS

- Telecommunication rooms or main distribution rooms.
- Horizontal cabling transition points
- Panel supports interconnect and distribution applications.

FEATURES

- Designed for wall mounting
- Up to 96 connections
- You can apply ST/SC/FC/LC/MU/E2000/MTRJ
- Compatible with screwed adapter and screwless type adapters
- Lockable front cover
- Can be supplied with:
 - » Pigtails
 - » Special splice holder
 - » Adapters
 - » Heat shrink splice protectors



TECHNICAL SPECIFICATIONS

Size	(w):290mm x (d): 320mm (h):90mm
Weight	Approx 3,55 kg
Fiber Capacity	0-96 Port
Adaptor Type	ST,SC,FC,LC,MU,E2000,MTRJ
Color	Ral 9005 Black- Ral 7035
Mounting	Wall mount
Material	METALIC