

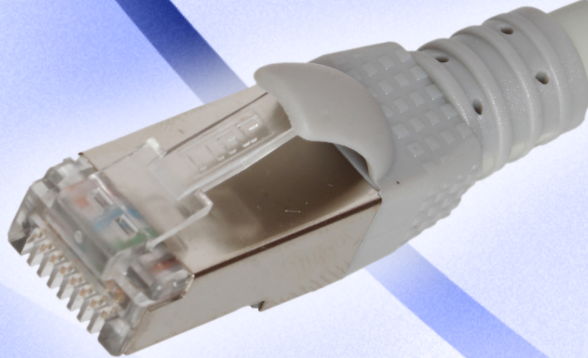
NETWORK COMMUNICATION SOLUTIONS

CAT7 SERIES

SFTP CAT7 PATCH CABLES



PATCH CABLE CAT7(A)



APPLICATIONS

- » Designed for use with Gigabit networks
- » Patches from hub to distribution panel
- » Connects workstation to wall outlet
- » 10 Base-T, 100 Base-TX Fast Ethernet, 1000Base-T (IEEE802.3), 100 Base T4
- » Token Ring 4-16 Mbit, 100VG-Any LAN
- » 155, 622, 1200 Mbit ATM
- » ISDN, Voice, T1, Voip
- » Power over Ethernet (POE)
- » 1000 Mhz Broadband Video

TECHNICAL SPECIFICATIONS

- | | |
|----------------------------|--|
| » Outer Diameter | : 6.5 mm(nom) ± 0.5 |
| » Durability | : 1000 Loop |
| » Impedance | : 100 ohm |
| » Contact Resistance | : 20m Ohm max. |
| » Imbalance Resistance | : %2 Max |
| » Dielectric Strength | : 1000 Volt/1 minute min. |
| » Isolation Resistance | : 500MOhm min.@500 Vdc |
| » Storage Temperature | : -40°C.....+80°C |
| » Operating Temperature | : -20°C.....+60°C |
| » Outer jacket | : PVC / LSZH |
| » Retention | : 50 N (11 lBF) for 60 ± 5 s |
| » Mating cycle life | : Min. 1000 cycles |
| » Tensile strength | : ≥ 90 N per wire |
| » Type | : Unshielded RJ45 8P8C modular plug. |
| » Housing | : UL listed 94V-0 flame retardant polycarbonate |
| » IDC blades | : Phosphor bronze, gold plating over 100 μ in of nickel in contact area. |
| » Conductor | : Stranded bare copper. |
| » AWG | : 24/26 AWG |
| » Drain Wire | : Solid tinned copper. |
| » Transmission Performance | : 1-750 Mhz specifications |



COLOUR _____ LENGTH _____
FO-SFTP-CAT7(a)-XYZZZ

STANDARD AND PERFORMANCES

- » ANSI / EIA / TIA 568-C.2
- » ISO / IEC – 11801 Class F
- » EN 50173
- » IEC 60603-7-7
- » 10 GBASE -T 10 Gigabit Eth.


Art No
Product Description
FO-SFTP-CAT7a-XYZZZ
SFTP Cat7a Patchcord L: x meter.
FO-SFTP-CAT7-XYZZZ
SFTP Cat7 Patchcord L: x meter.