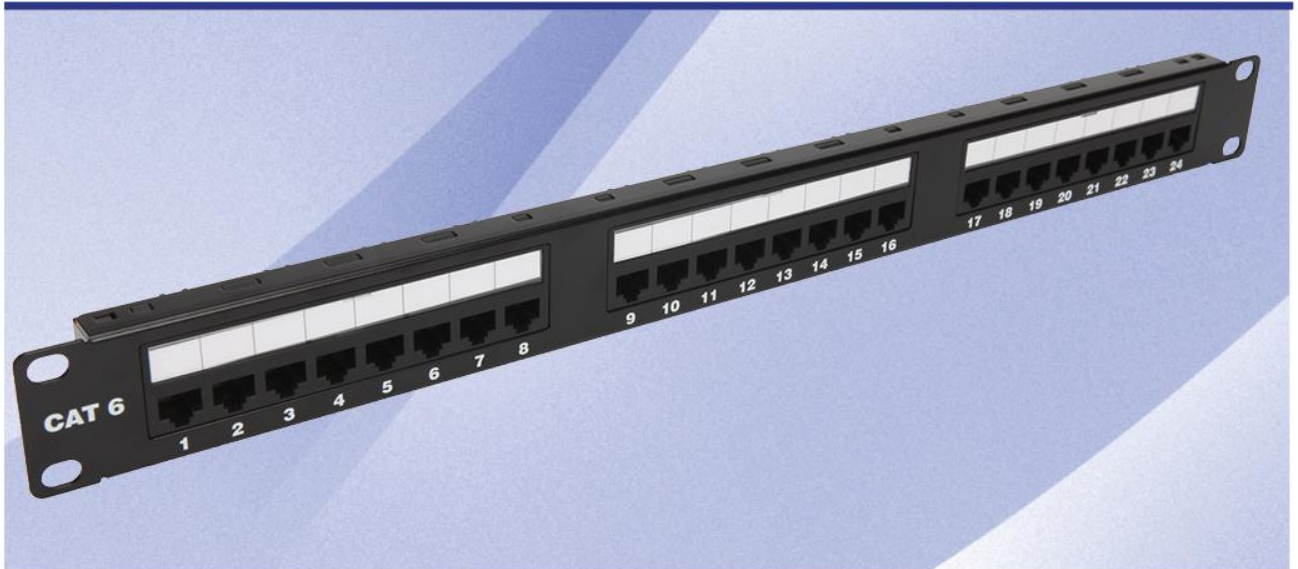


CAT6 24 PORT UTP FAST ETHERNET PATCH PANELS (IDC Type)



FEATURES

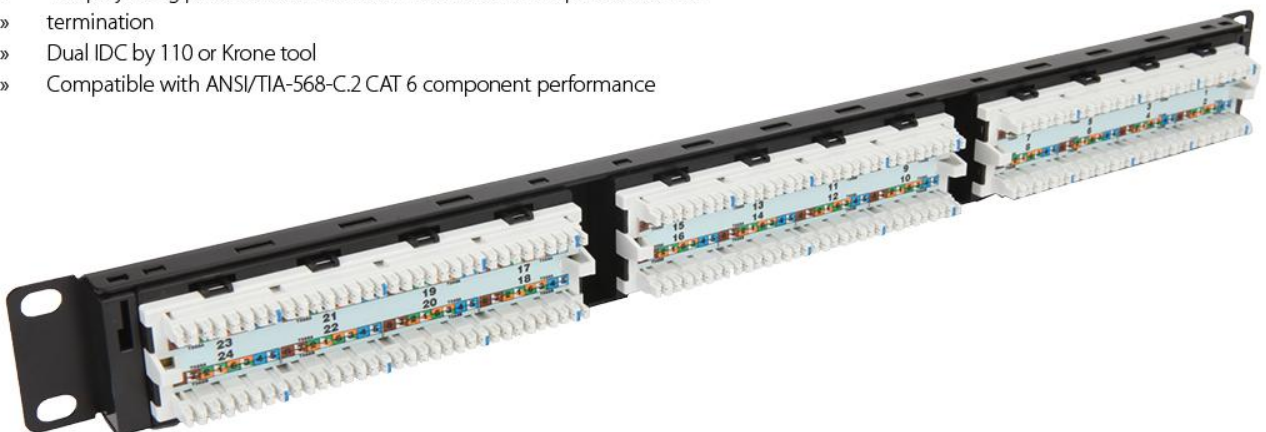
- » Hinged style window with white labels
- » Each 8 Port based module is replaceable

STANDARDS & PHYSICAL SPECIFICATIONS

- » 250 MHz and above
- » ISO/IEC - 11801
- » UL 1863 safety listed
- » UL 94V-0 fire retardant plastic
- » ANSI/TIA/EIA-568-C.2
- » 482.6mm(W) x 43.65mm(H) x 35.0mm(D)

APPLICATION

- » The projecting portion of the IDC terminal holds wires in position before termination
- » Dual IDC by 110 or Krone tool
- » Compatible with ANSI/TIA-568-C.2 CAT 6 component performance



Art No

FO-SP-3000-PCB-24PC6

Product Description

1U 24 Port UTP Cat6 Patchpanel (110 Krone IDC - Horizontal)

